



SABANCI MEDİKAL

**Medical Supplies
& Medical Products**



**Address:BAŞAKŞEHİR MAH. İSHAKPAŞA SK. BULVAR İSTANBUL SİTESİ
BULVAR REZİDANS BLOK NO:2ND BAŞAKŞEHİR/İSTANBUL/TURKEY
Post code: 34480**



SABANCI All of our products are ISO and CE certified MEDİKAL



I. V. Catheter with injecion Valve & Wings

Engineered for Excellence



Features

- I.V. Catherter with a more Transparent body**
- A specially designed injection port cap which has a recessed plug and a protective skirt to minimize contamination .
- Disposable, sterile, non-pyrogenic.
- Sealed blister paking.

		Catheter				
Gauge	Color Code	Ext.Dia. (mm.)	Length (mm.)	Fliw Rate (ml./min.)	Ref.No. Clear	Qty.in carton Inner/Outer
14	Orange	2.1	45	300	4100142	100/1000
16	Grey	1.8	45	200	4100162	100/1000
17	White	1.5	45	140	4100172	100/1000
18	Green	1.3	45	90	4100182	100/1000
20	Pink	1.1	33	61	4100202	100/1000
22	Blue	0.9	25	36	4100222	100/1000
24	Yellow	0.7	19	15	4100242	100/1000
26	Purple	0.6	19	13	4100262	100/1000


I.V. Catheter with Wings for Neonates

Miniature IV catheter with a small, fine and smooth design, especially for use in neonates(children below 1 month of age).

Features

- Small wings and absence of injection port permits easy handling .
- Large internal diameter for increased flow rate and reduce peel back effect
- Siliconeized needle tip for atraumatic tissue penetration.
- Transparent flashback chamber for easy visualization of blood.
- Available in size 26G.
- Disposable, sterile and non-pyrogenic.
- Sealed blister paking.



Catheter							
Gauge	Color Code	Ext. Dia. (mm.)	Length (mm.)	Flow Rate (ml./min.)	Ref. No.		Qty. in carton Inner / Outer
					Radiopaque	Clear	
26	 Purple	0.6	19	13	4040262		



Three way stop cock

Engineered for Excellence

Features

- Multiple channels for Multiple infusion therapy.
- Designed to withstand pressure upto 5 bars.
- Smooth, fully rotatable tap.
- Stability tested pneumatically and hydrostatically.
- Tap turns every 360 without limitation.
- Flow shuts off every 90.
- Minimal dead space in ports to ensure precise drug administration and maximum infusion flow.

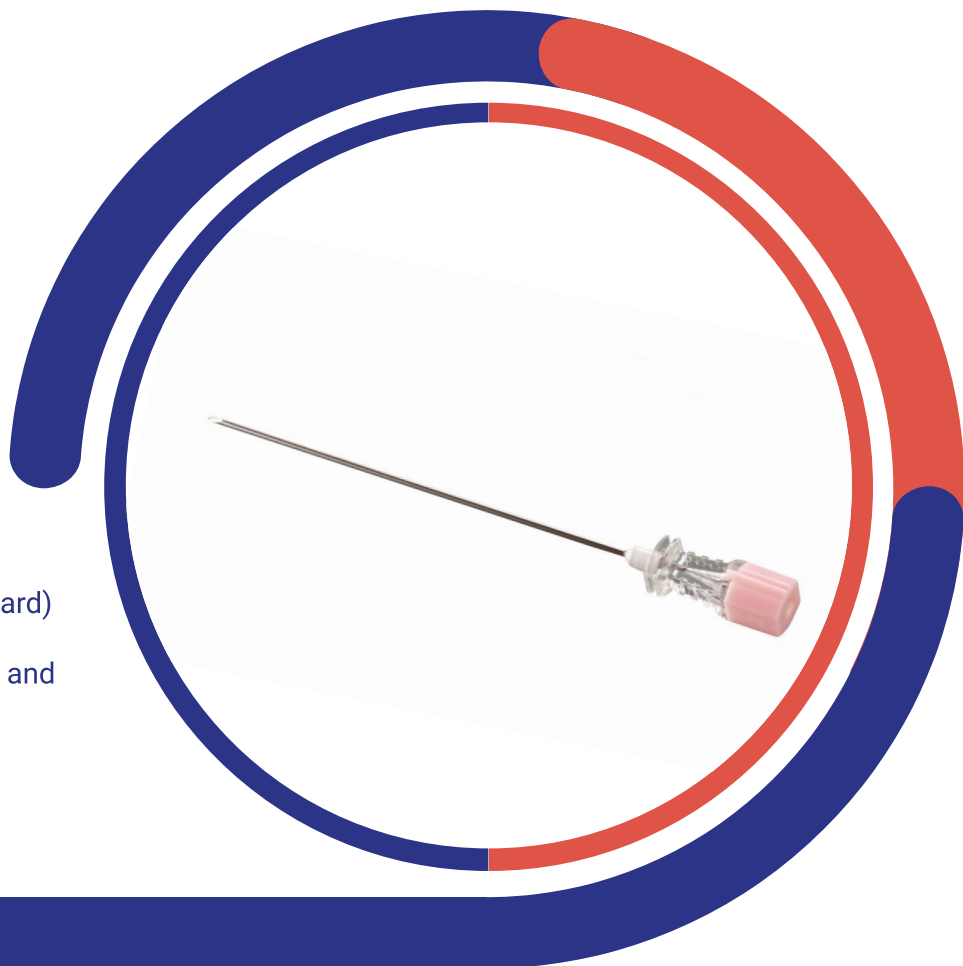
- Continuous flow channels.
Arrow indication marks on top to indicate of flow.
- Low profile for stable and safe Positioning
- Available in lipid resistant/non-lipid resistant
- Available with blue and red pegs for easier identification.
- Disposable, sterile and non-pyrogenic.
- sealed blister paking.
- three-way stopcock mad of polycarbonate, latex free .

Spinal Needle (Quincke Bevel)

Engineered for Excellence

Features

- Ultra fine quincke tip for better dura puncture appreciation and to prevent post dura puncture headache.
- color-coded hub-stylet (international standard) for fast detection of the needle size.
- Optimal sized stylet prevents tissue coring and obstruction of the needle size.
- Transparent hub for fast detection of CSF.
- Needle length 3.5'.
- Sterile for single use only.
- Made of superfine surgical steel .



Size	Ref . No.	Qty. in carton Inner / Outer
18 G	667318G	25 / 500
19 G	667319G	25 / 500
20 G	667320G	25 / 500
21 G	667321G	25 / 500
22 G	667322 G	25 / 500
23 G	667323 G	25 / 500
24 G	667324 G	25 / 500
25 G	667325 G	25 / 500
26 G	667326 G	25 / 500
27 G	667327 G	25 / 500

Central Venous Catheter

In certain cases where I.V administration through the peripheral veins is not appropriate , a Central Venous Catheter (CVC) is used .

Centra is a short-term CVC and can be left in the patient for up to 29 days .

Features

- Designed to easily conform to vessel anatomy
- High-grad polyurethane polymers used in the catheter body to increase patient tolerance during extended use .
- Multi-lumen designs with high flow rates .
- Soft Tip Technology

INCLUDES KIT:

Scalpel
Introducer Needle
Guidewire
Fixation Wing
Dilator
Central Venous Catheter
Introducer Syringe
Sterile Drape

STOCK OPTIONS

FRENCH SIZE	LENGTH	LUMEN COUNT
5.5	15	SINGLE
Fr 7	20	DOUBLE
Fr 7	20	TRIPLE

CUSTOM SIZE ALSO AVAILABLE

Dialysis Catheter

During some cases of hemodialysis , a dialysis catheter is needed to exchange the blood between the patient and the dialysis machine .

Features

- Designed to easily conform to vessel anatomy
- High-grad polyurethane polymers used in the catheter body to increase patient tolerance during extended use .
- Engineered to improve efficiency of dialysis by using strategically placed openings in the arterial port .



INCLUDES KIT:

- Scalpel
- Introducer Needle
- Guidewire
- Syringe
- Dilator
- Dialysis Catheter
- Drape Sterile

STOCK OPTIONS

LUMENS	FRENCH SIZE
SINGLE	8 FR / 10 FR
DOUBLE	9 FR / 12 FR
TRIPLE	13 FR / 14 FR

Femoral & Radial Introducer Sheath

Designed to allow for femoral or radial artery access during coronary catheterization, which is a minimally invasive procedure to access the coronary circulation using a catheter.

Features

- Made of high grade biocompatible medical polymers
- Advanced tipping technology used to achieve a lower insertion force .
- Specially engineered hemostasis valve to minimize blood leakage during insertion and withdrawal of devices.

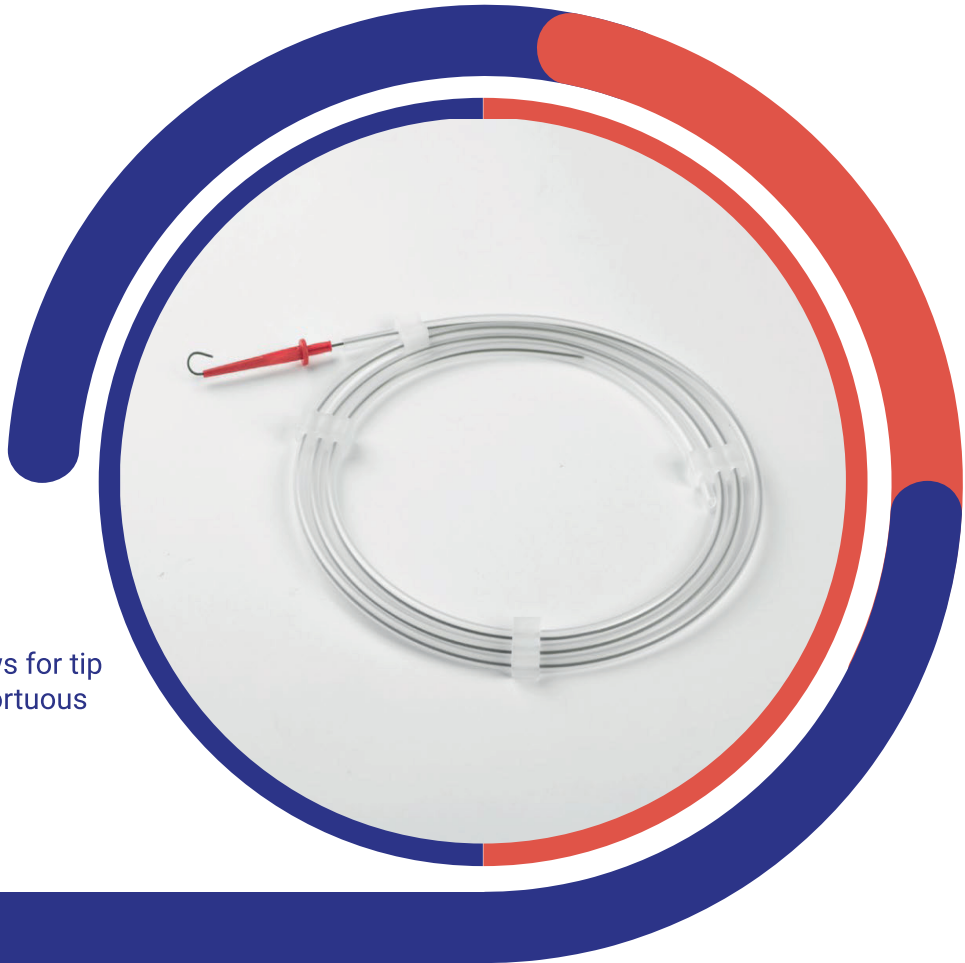
ALSO AVAILABLE IN HYDROPHILIC COATED AND SILICON COATED VERSIONS TO FURTHER LOWER THE INSERTION FORCE. CONNECTION BETWEEN THE SHEATH AND THE DILATOR CREATES A SMOOTH TRANSITION DURING INSERTION. SHEATH AND DILATOR TIPS. MANUFACTURED USING ADVANCED TIPPING TECHNOLOGY TO ACHIEVE A LOW INSERTION FORCE .

Diagnostic Guidewires

Wires used for percutaneous entry and guidance of Catheters to coronary or peripheral territories .

Features

- Engineered with a tapered core that allows for tip flexibility and smooth passage through tortuous anatomy .
- PTFE coated wire for reduced friction



**THE STANDARD STOCK DESIGN IA APTFE
. COATED 3 MM J-TIP WITH A FIXED CORE
DIMENSIONS 0.05" X 150 CM**

**,IF THIS TIP DESIGN, WIRE SIZE, MATERIAL
,OR CORE TYPE ARE NOT APPROPRIATE
WE ARE CAPABLE OF PROVIDING CUSTOMIZED
.SOLUTIONS BASED ON CUSTOMER SPECIFICATIONS**

Inflation Device

High pressure inflation device designed to exert pressure for balloon inflation and deflation.



Features

- 20 ml Chamber
- Capable of pressurizing up to 30 Bar (435psi)
- Polycarbonate structure allows for a strong hold during pressurization and under vacuum
- Easy release handle allows for rapid deflation of the balloon.

Hemostasis Valve Y Connector

For use during coronary angioplasty procedures, the Y Connector creates a one-way hemostasis valve on the end of a catheter.

Features

- Easy single-handed opening and closing of the hemostasis valve.
- Gentle hemostasis valve allows for easy access and manipulation of interventional devices.
- Designed to accommodate up to 9 Fr catheters.



**AVAILABLE IN BOTH PUSH-CLIK AND
PUSH-PULL VERSIONS.**

HEMOSTASIS VALVE

**ENGINEERED TO MINIMIZE BLOOD LOSS MAXIMIZE CONTROL
OF INTERVENTIONAL DEVICES SOFT TIP TO PROTECT VESSELS
FROM DAMAGE .**

ONE-HANDED OPERATION WITH EASY RELEASE LEVER

AV Fistula Needle

Specialty needles used during the hemodialysis process to connect bloodlines to blood vessels

Features

- Silicon coated cannula to improve patient comfort upon insertion, and to reduce the risk of clotting.
- Safety Guard to reduce the likelihood of needle stick injuries
- Specially engineered clamp that gives the care provider the ability to react in the event of an adverse issue .

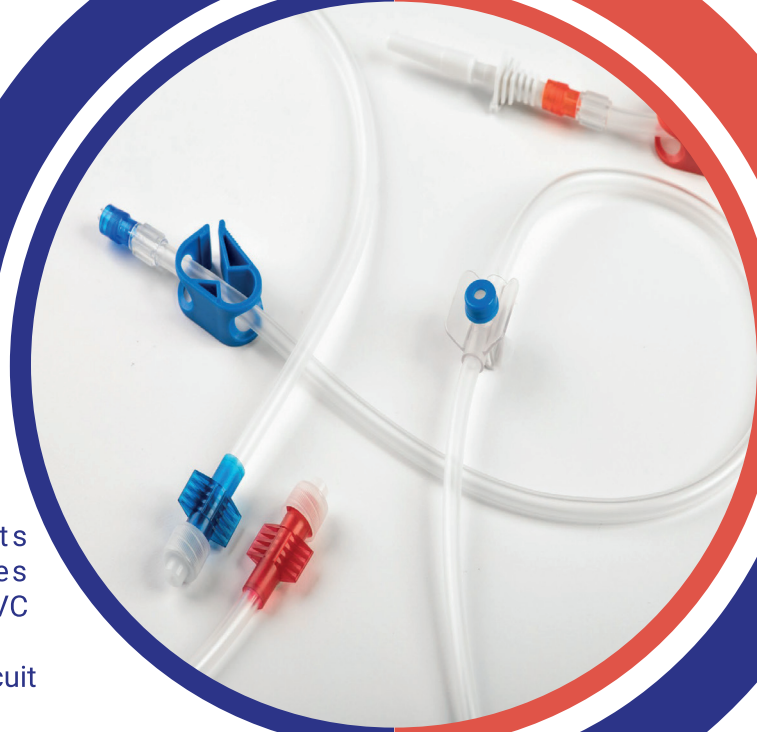
**AVAILABLE IN 16 G AND 17 G
(WITH AND WITHOUT NEEDLE BACK-EYE)**

Blood line

Full Arterial and Venous lines to connect a patient to a Dialysis Machine.

Features

- Contains all the standard components needed to connect to various machines
- Tubing made of high-grade bio-compatible PVC material .
- Engineered to reduce turbulence within the circuit



▶ SUBSTITUTE TUBING MATERIAL AVAILABLE



Extension Lines

Used to extend intravenous lines or to attach transfusion sets, syringe pumps, three-way stop cocks, and other accessories that require intermittent injection.

Features

- tubing manufactured from medical grade PVC .
- ISO 594/1 and ISO 594/2 compliant end connections .

LIPID-RESISTANT MATERIAL OPTIONS AVAILABLE

Infusion Set

A sterile, single use, single chamber IV infusion set for pressure and gravity infusion of fluids .

Features

- Features can be customized to fit your market needs .





Transducer Protector

Transducer protectors are used in hemodialysis blood lines to keep the blood in the circuit separated from the machine to reduce the risk of patient cross-contamination

Features

- Anti-bacterial hydrophobic air filter
- Female lure lock and male lure arm ensure safe and secure connections

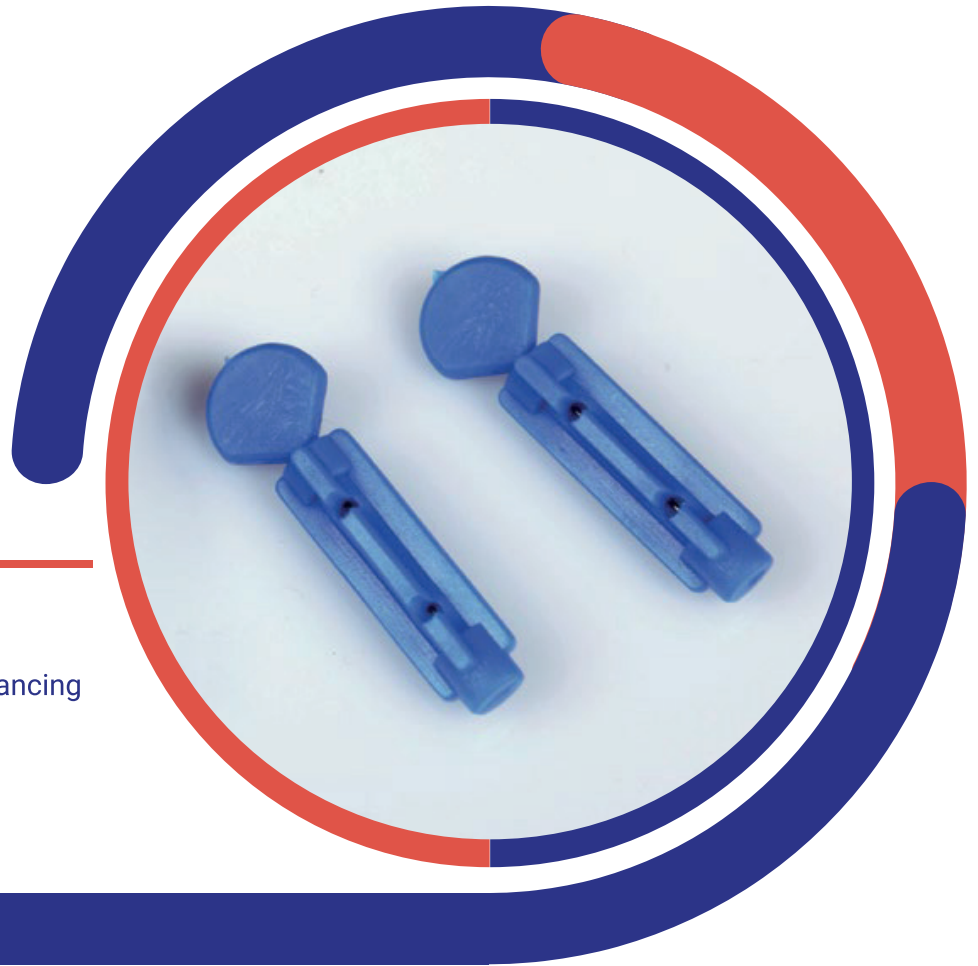
▶ COLORED HOUSING AVAILABLE UPON REQUEST

Blood Lancer

Needle used to puncture capillaries and obtain a blood sample

Features

- Designed to be compatible with most lancing devices
- In-line needle tip
- Easy twist off cap



Oxygen Mask

Device worn over the nose and mouth through which oxygen is supplied to a patient from a storage tank .

Features

- Latex free
- Volume-controlled design
- incurved nose seal designed to prevent oxygen from irritating the eyes

MULTI-CHANNEL OXYGEN TUBE THAT ALLOWS FOR CONTINUOUS OXYGEN FLOW EVEN IF THE TUBE IS KINKED

SMOOTH EDGES DESIGNED FOR PATIENT COMFORT

Nebulizer Mask

Nebulizer are used during aerosol therapy to vaporize a drug so that the patient can inhale it directly .

Features

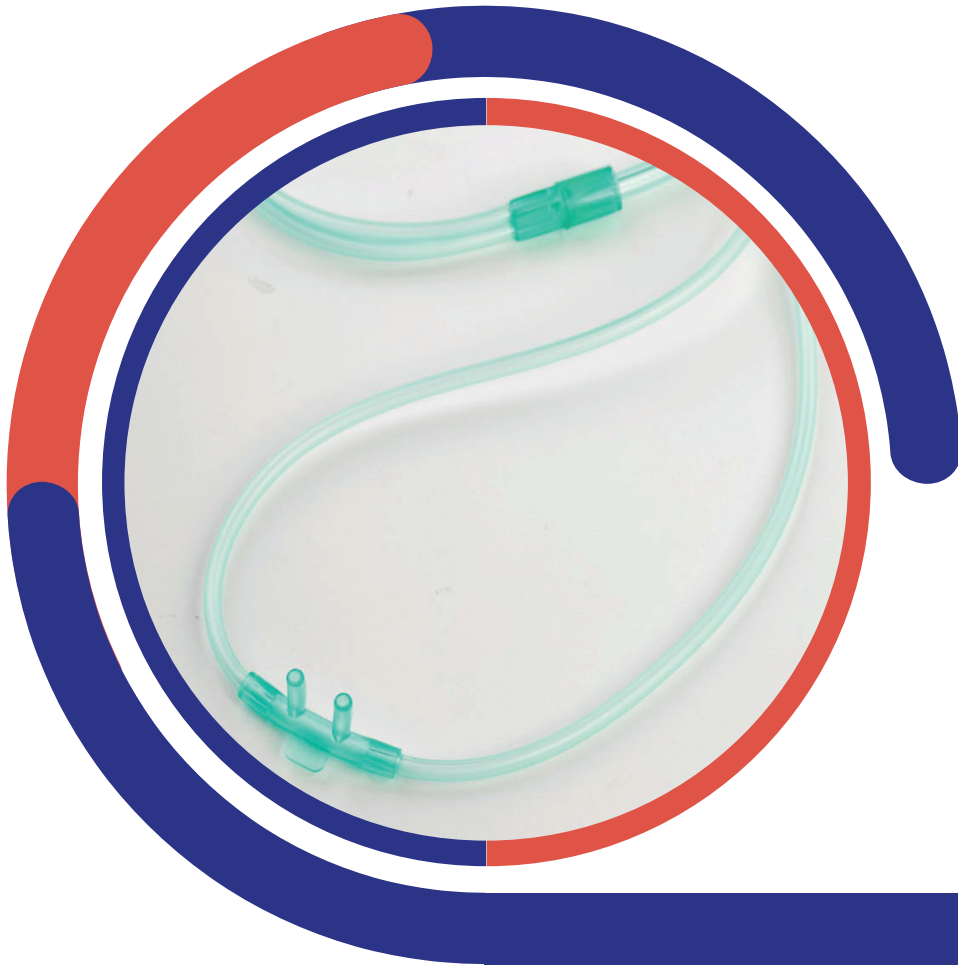
- Designed to output particles with a mean micron diameter of 3.3 Microns .
- Stable housing for the cone to ensure cone to ensure consistent vaporization
- Volume indicators on the cup allow for easy indication of the amount to drug in the cup

Smooth edges designed to comfortably fit a patient .

Incurved nose-seal, wich prevents medication from entering the eyes



▶ AVAILABLE IN 3 SIZE
NEONATAL-PEDIATRIC-ADULT



Nasal Cannula

A device used to deliver supplemental oxygen airflow to a patient or person in need of respiratory help .

Features

- Flow rate of 1 -- 4 L/min
- soft nasal prongs to reduce nasal irritation
- Flexible tube to reduce pressure on the patients' ears

AVAILABLE IN 3 SIZE

▶ NORMAL - PEDIATRIC - ADULT

Venturi Mask

An oxygen mask with the connectors that control the concentration of oxygen delivered to the patient

Features

- latex free
- Volume controlled design
- incurved nose seal designed to prevent oxygen from irritating the eyes
- Standard colored valves to control the rate of oxygen delivery .



AVAILABLE IN 3 SIZE

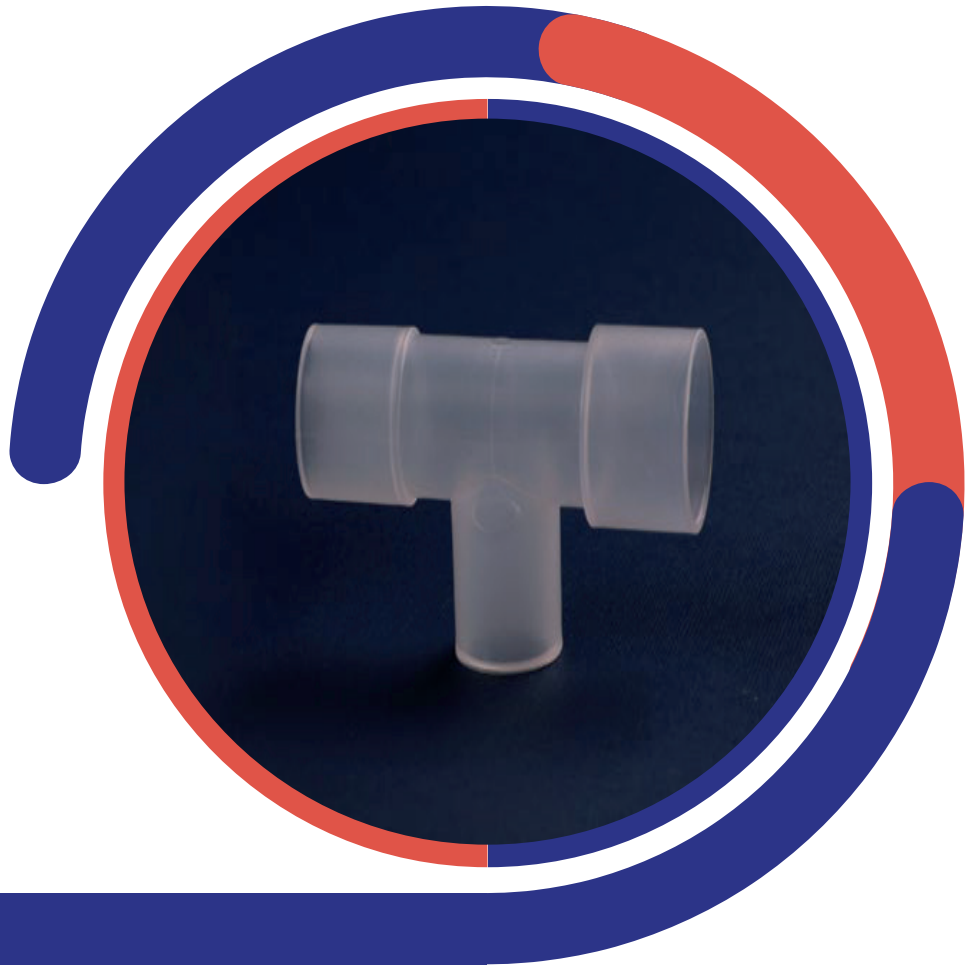
▶ NORMAL - PEDIATRIC - ADULT

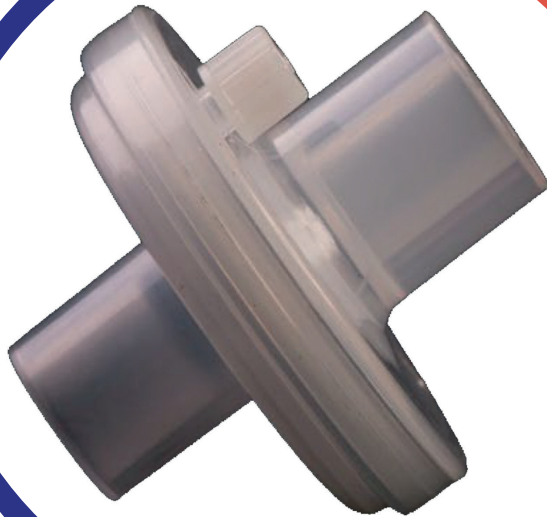
Nebulizer Mouthpiece

- ▶ Mouthpiece connected to a T-piece nebulizer
- ▶ Extra tubing at end of assembly to reduce drug waste during use

T-Piece

- ▶ Nebulizer connected to a T-piece which can be directly placed in a mechanical ventilation circuit





Bacterial Filter

For use on anesthetized or respiratory care patients who require a breathing circuit.

Features

- Tidal Volume : 150-1500 ml
- Dead Space : 25 ml
- Filtration Efficiency : 99.9999%
- Connection : 22M/15F-22F/15M
- Gas monitoring connection available

Ventilator & Anesthesia Breathing Circuits

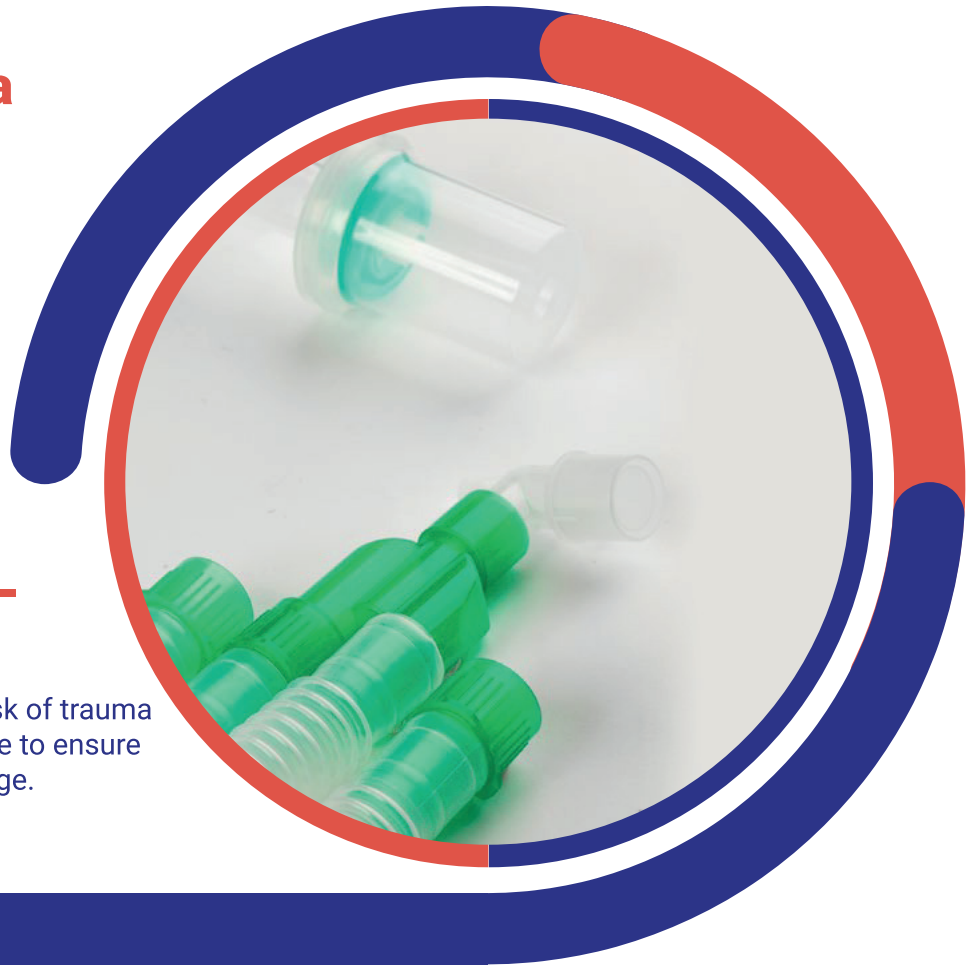
Designed to connect patients to mechanical ventilation systems or anesthesia machines

Tubing

Light-weight corrugated tubes with a Kink and Crush resistant design are used in the Ventilator and Anesthesia Breathing Circuits .

Features

- Light-weight corrugated tubes reduce risk of trauma
- connector are directly bonded to the tube to ensure gas tight connections and prevent leakage.
- Self-sealed clear water trap system.



AVAILABLE IN 3 SIZE



PEDIATRIC - ADULT
CUSTOM LENGTHS AVAILABLE

LATEX EXAMINATION POWDER FREE GLOVE



Latex Examination Glove is used as a good biological barrier to protect the user's hands against contamination. An all-rounder glove that is suitable for use in medical healthcare and dental procedures. It's elastic and soft latex film provides superior dexterity with good fit & tactile sensitivity. This glove is available in chlorinated or polymer powder free at the interior that helps to promote a smooth donning and doffing experience. The glove is finished with a textured surface for secure grip and added handling precision.

Size	length (mm)	Palm width (mm)	Thickness : Single wall (mm)
XS		76 ± 3	Finger : Min 0.08 (≥ 3.2 Mil) Palm : Min 0.08 (≥ 3.2 Mil)
S	Min 230,	84 ± 3	
M	Min 240	94 ± 3	
L	(All sizes)	105 ± 3	
XL		113 ± 3	

LATEX EXAMINATION POWDER FREE GLOVE

Latex Examination Glove is used as a good biological barrier to protect the user's hands against contamination. An all-rounder glove that is suitable for use in medical healthcare and dental procedures. It's elastic and soft latex film provides superior dexterity with good fit & tactile sensitivity. This glove is available in chlorinated or polymer powder free at the interior that helps to promote a smooth donning and doffing experience. The glove is finished with a textured surface for secure grip and added handling precision.



Size	length (mm)	Palm width (mm)	Thickness : Single wall (mm)
XS		76 ± 3	Finger : Min 0.08 (≥ 3.2 Mil) Palm : Min 0.08 (≥ 3.2 Mil)
S	Min 230,	84 ± 3	
M	Min 240	94 ± 3	
L	(All sizes)	105 ± 3	
XL		113 ± 3	

STERILE LATEX SURGICAL POWDER FREE GLOVE

Latex Surgical Glove is known for its strong tear resistance, superb elasticity and softness that not only provide great biological barrier protection but also superior fit, comfort, dexterity and flexibility. Fully anatomical design with curved fingers follow the natural finger shapes at rest provides free range motion and minimises hand fatigue during surgical procedure. Palm textured surface enhances slip resistance for extra grip and control. Polymer coated powder free interior enables incredible smooth donning experience.



Size	length (mm)	Palm width (mm)	Thickness : Single wall (mm)		
			LSGPF	SDKF 9.9g	SKF 11.1g
5.5	Min 280	72 ±4	Finger: Min 0.10 Palm: Min 0.10 Cuff: Min 0.10	Finger: 0.21±0.02 Palm: 0.18±0.02 Cuff: 0.16±0.02	Finger: 0.24±0.02 Palm: 0.21±0.02 Cuff: 0.18±0.02
6.0		77 ± 5			
6.5		83 ± 5			
7.0		89 ± 5			
7.5		95 ± 5			
8.0		102 ± 6			
8.5		108 ± 6			
9.0		114 ± 6			

STERILE LATEX SURGICAL POWDERED GLOVE

Latex Surgical Glove is known for its strong tear resistance, superb elasticity and softness that not only provide great biological barrier protection but also superior fit, comfort, dexterity and flexibility. Fully anatomical design with curved fingers follow the natural finger shapes at rest provides free range motion and minimises hand fatigue during surgical procedure. Palm textured surface enhances slip resistance for extra grip and control. The evenly distributed lightly powdered at the donning side promotes efficient donning and doffing.



Size	length (mm)	Palm width (mm)	Thickness : Single wall (mm)		
			LSGPF	SDKF 9.9g	SKF 11.1g
5.5	Min 280	72 ± 4	Finger: Min 0.10 Palm: Min 0.10 Cuff: Min 0.10	Finger: 0.21±0.02 Palm: 0.18±0.02 Cuff: 0.16±0.02	Finger: 0.24±0.02 Palm: 0.21±0.02 Cuff: 0.18±0.02
6.0		77 ± 5			
6.5		83 ± 5			
7.0		89 ± 5			
7.5		95 ± 5			
8.0		102 ± 6			
8.5		108 ± 6			
9.0		114 ± 6			

NITRILE EXAMINATION POWDER FREE GLOVE



Nitrile Examination Glove is used as a good biological & chemical barrier to protect the user's hands against contamination and dangerous substances. It is the most popular and reliable glove for medical healthcare and dental industries. Made of premium compounded nitrile eliminating latex allergy concern. It comes with excellent fit, comfort, sensitivity and protection. Its textured surface helps to provide secure grip and added handling precision. Proudly available in an extensive selection of colors giving businesses more options.

Size	length (mm)	Palm width (mm)	Thickness : Single wall (mm)
XS		76 ± 3	Finger : Min 0.05 (≥ 2.0 Mil) Palm : Min 0.05 (≥ 2.0 Mil)
S	Min 230	84 ± 3	
M	Min 240	94 ± 3	
L	3 ± 10	105 ± 3	
XL		113 ± 3	
XXL		123 ± 3	

Nebulizer Machine

- Weight:** 1.65KG
- Size:** 223*150*105mm
- Motor pump:** oil-free ball-bearing piston motor
(with thermal fuse protector)
- Power supply:** AC 220V + 10%; 50/60Hz
- Power consumption:** < 60W;
- Motor Work life:** > 3,000 hours
- Compressor Pressure:** 2.2-3.0Bar; 30-40psi
- Compressor Operation flow:** > 14LPM
- Particle Size:** < 5.0 μm (80%)
- Average nebulizing rate:** 0.30 ml /min
- Medication:** 2-10ml
- Sound level:** < 55dB(A)



Accessories: Medicine Cup, adult mask, child mask, mouthpiece,
Air tubing(2.1m), air filter(5pcs)

Operation Temperature Range: 10°C ~to 40°C (50°F ~104°F)

Operation Humidity Range: 10% ~95% RH

Storage Temperature Range: -20°C-70°C (-4F to 158F)

Storage Humidity Range: 10% ~95% RH



SABANCI MEDİKAL

**Medical Supplies
& Medical Products**



SABANCI MEDİKAL



 [sabanci_medikal](https://www.instagram.com/sabanci_medikal)

 www.sabancimedikal.com.tr

 Info@sabancimedikal.com.tr

 +90 552 730 76 60

 +90 552 870 77 60

 +90 212 843 87 75